



SEARCH AND RESCUE IN THE ANTARCTIC

CDR PABLO CARRASCO RONDANELLI

MRCC CHILE

PATRIOTISM

HONOR – LOYALTY – COURAGE – INTEGRITY – DUTY



CHILE AND ANTARCTICA, A COMMON HISTORY THROUGH THE YEARS

1916

1947

2025



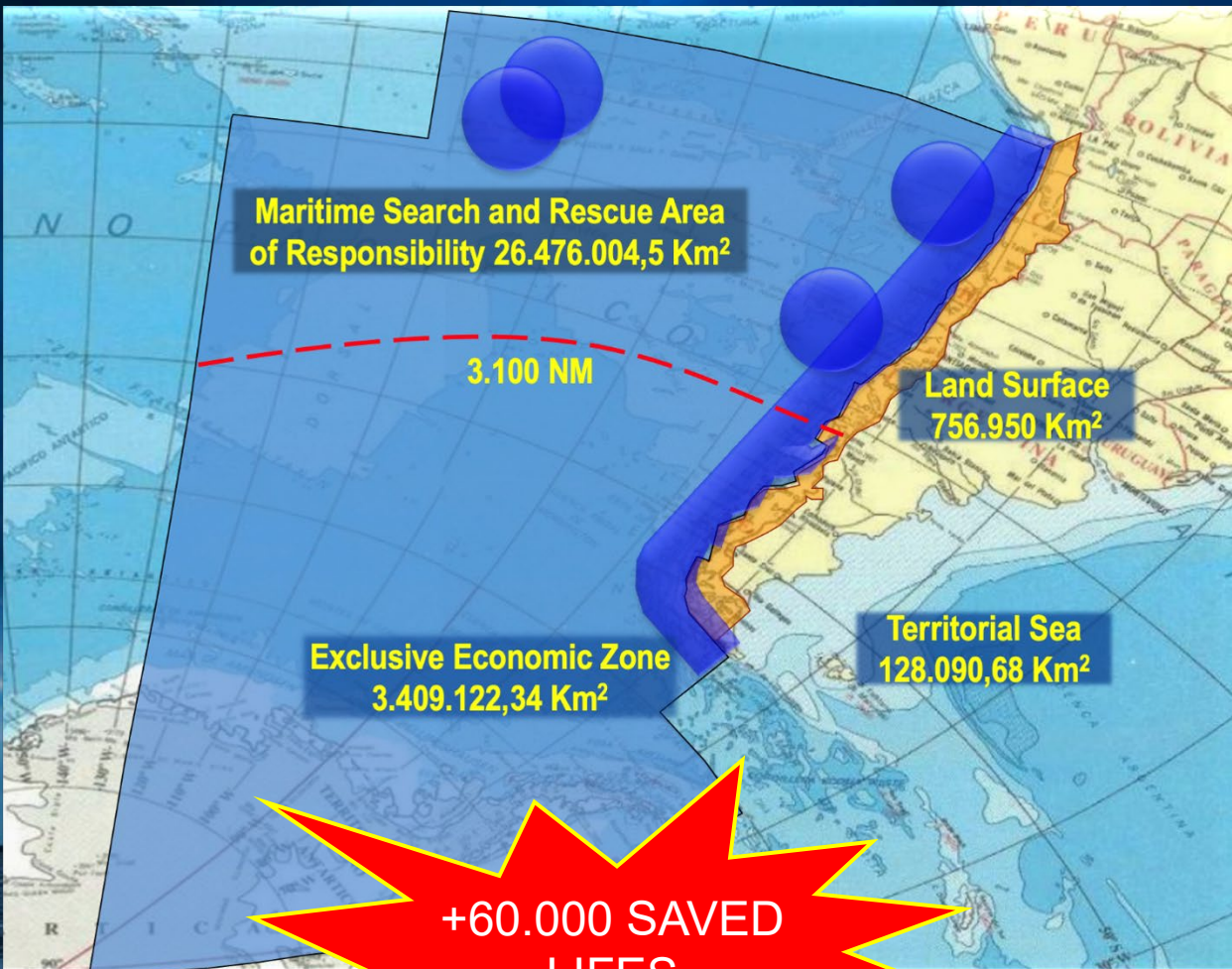
SHACKLETON'S EXPEDITION RESCUE

FIRST CHILEAN ANTARCTIC BASE "SOBERANIA"

CURRENT CHILEAN ANTARCTIC BASES

PATRIOTISM

HONOR – LOYALTY – COURAGE – INTEGRITY – DUTY



CHILEAN MARITIME SEARCH AND RESCUE AREA OF RESPONSIBILITY

5th MOST EXTENSIVE SAR AREA IN THE WORLD

+60.000 SAVED LIVES



USA

AUSTRALIA

NEW ZEALAND

SOUTH AFRICA

PATRIOTISM

HONOR – LOYALTY – COURAGE – INTEGRITY – DUTY



COMMANDER IN CHIEF OF THE CHILEAN NAVY



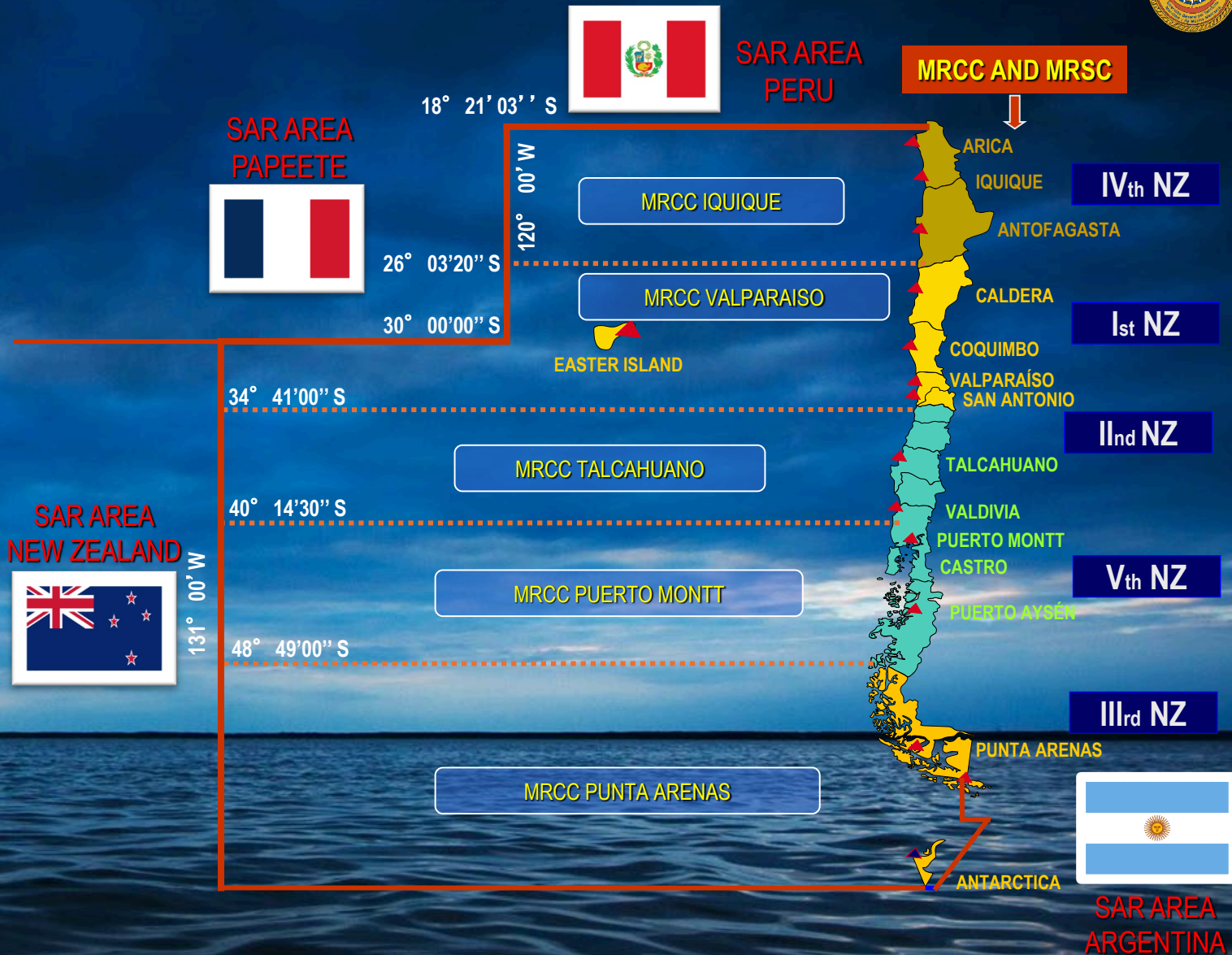
DIRECTOR GENERAL OF THE MARITIME TERRITORY AND MERCHANT MARINE



DIRECTOR OF MARITIME SAFETY, SECURITY AND OPERATIONS



MRCC CHILE



PATRIOTISM

HONOR – LOYALTY – COURAGE – INTEGRITY – DUTY



ATF-60 LIENTUR



OPV-83 FUENTEALBA



AP-41 AQUILES

YEAR OF BUILD: 2024
 SHIPYARD: ASMAR CHILE
 CREW: 86 MEMBERS
 SPEED: 15 KNOTS
 LENGHT: 111 MTS.
 BREADHT: 21 MTS.
 DRAFT: 7,2 MTS.
 AUTONOMY: 60 DAYS / 14.000 NM

- 34 SCIENTIST
- 400 M3 DMFO
- 400 M3 CARGO PALLETS

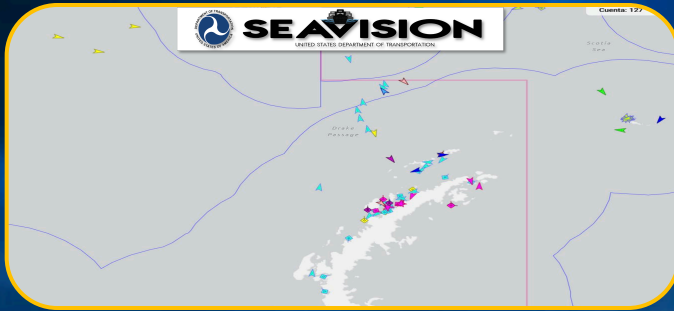


AGB-46 OSCAR VIEL



PATRIOTISM

HONOR – LOYALTY – COURAGE – INTEGRITY – DUTY



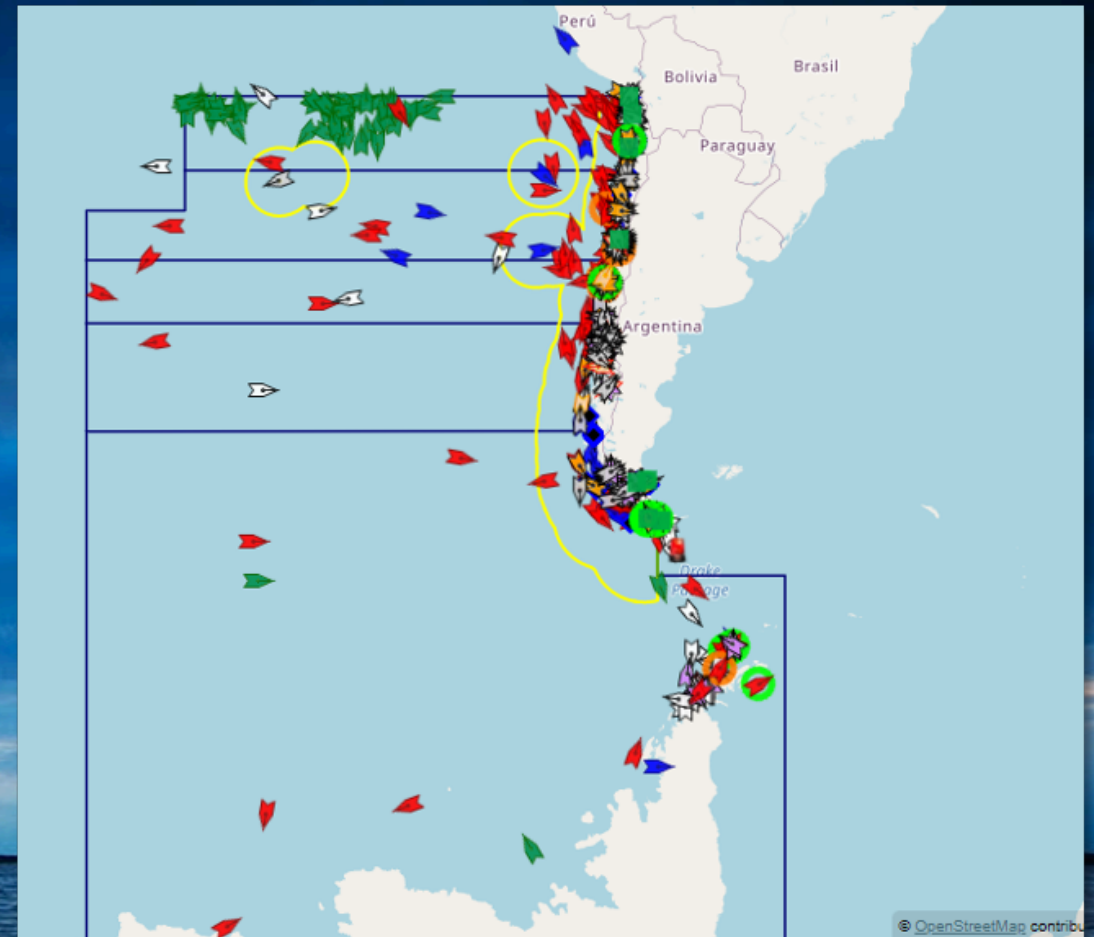
SEAVISION



MINT



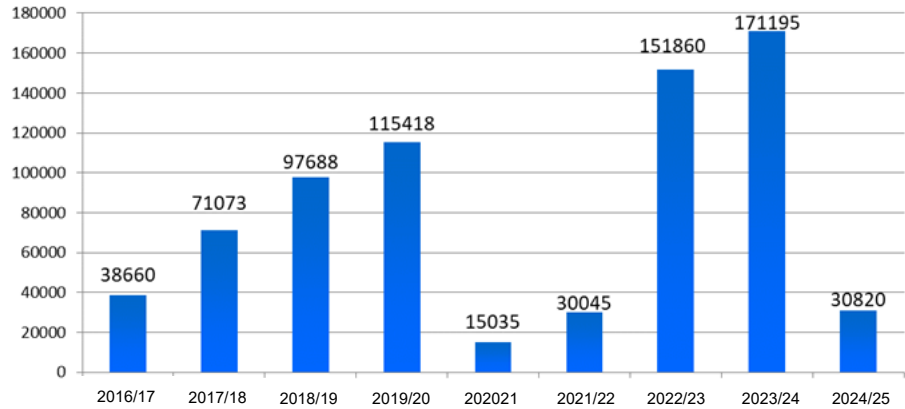
DIRECTEMAR
DATA BASE



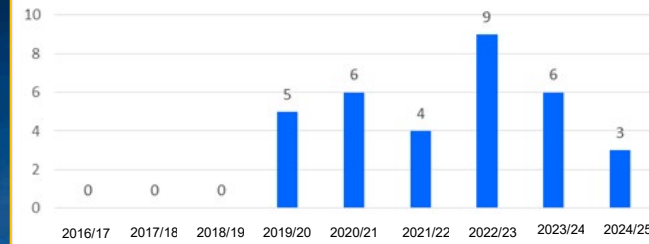
GRAFIMAR WEB



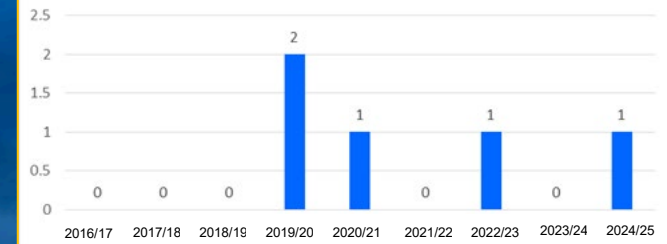
TOTAL NUMBER OF PEOPLE BY SEASON



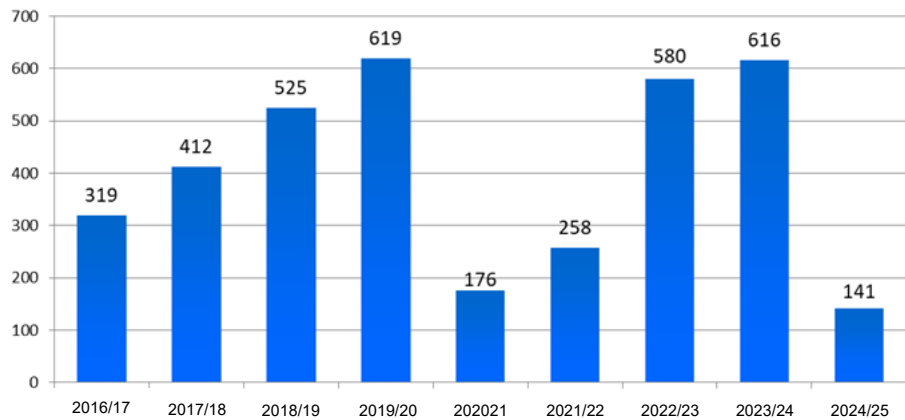
NUMBER OF MEDICAL EVACUATIONS



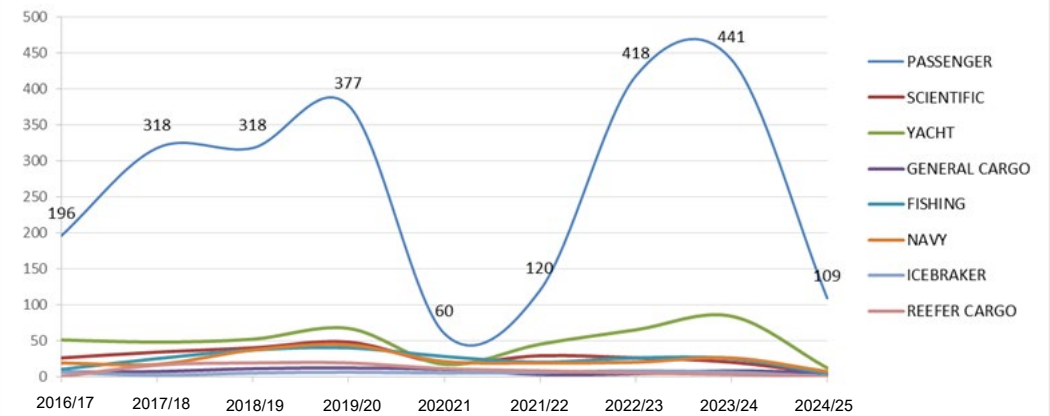
NUMBER OF SEARCH AND RESCUE CASES



TOTAL NUMBER OF SHIPS BY SEASON



STATISTICAL TABLE BY TYPE OF SHIP





EMERGENCY

INFORMATION

COORDINATION

RESCUE



LAT: 57° 15' S
LONG: 62° 24' W



45 NM EAST FROM FILDES BAY
1.300 KMS. FROM PUNTA ARENAS



PASSENGERS: 100 PERS.



CREW: 54 MEMBERS





7.11 AND 7.12 IMO COURSES TO QUALIFY CREW MEMBERS FOR POLAR NAVIGATION



AWARE OF COMMUNICATIONS AND WEATHER CONDITIONS



MAIN ASSISTANCE CALL REFERS TO MEDICAL EVACUATIONS



ICEBERGS AND HARD ICE REPRESENT THE MOST DANGEROUS THREAT FOR SEAFARERS



INCREASE OF YACHT'S WORLDWIDE OCEAN RACES THROUGH ANTARCTIC WATERS





TECHNOLOGY



TRAINING



LEGISLATION

THE MAIN RESOURCE TO ENSURE THE SAFETY OF LIFE AT SEA IS THROUGH PLANIFICATION, COORDINATION AND ADHERENCE TO LEGAL AND TECHNICAL PROVISIONS IN FORCE IN ANTARCTICA



“Finally, it was the Chilean Government that was directly responsible for the rescue of my comrades. This southern Republic was unwearied in its efforts to make a successful rescue, and the gratitude of our whole party is due to them.”

Sir Ernest Shackleton

